

SUPER ★ TALENT™

How to Use the Super Talent Wi-Cap



Contents

1. Setting up the Super Talent Wi-Cap
2. Navigating the files on a computer
3. Navigating the files on a mobile interface
4. How the Wi-Cap can be used
5. Support and Contact information

Getting Started

1. Turn on the Wi-Cap by holding the large button for at least 1.5 seconds. Wait for the light to turn solid blue.
2. Open the wireless network list on your device and choose Wi-Cap.
3. Enter your password to access the Wi-Cap's wireless network.

The Super Talent Wi-Cap is now connected to your device and ready for your to access the data.

Navigating with a Computer Interface

Open a browser.



Navigation Menu on a computer interface.

From left to right:

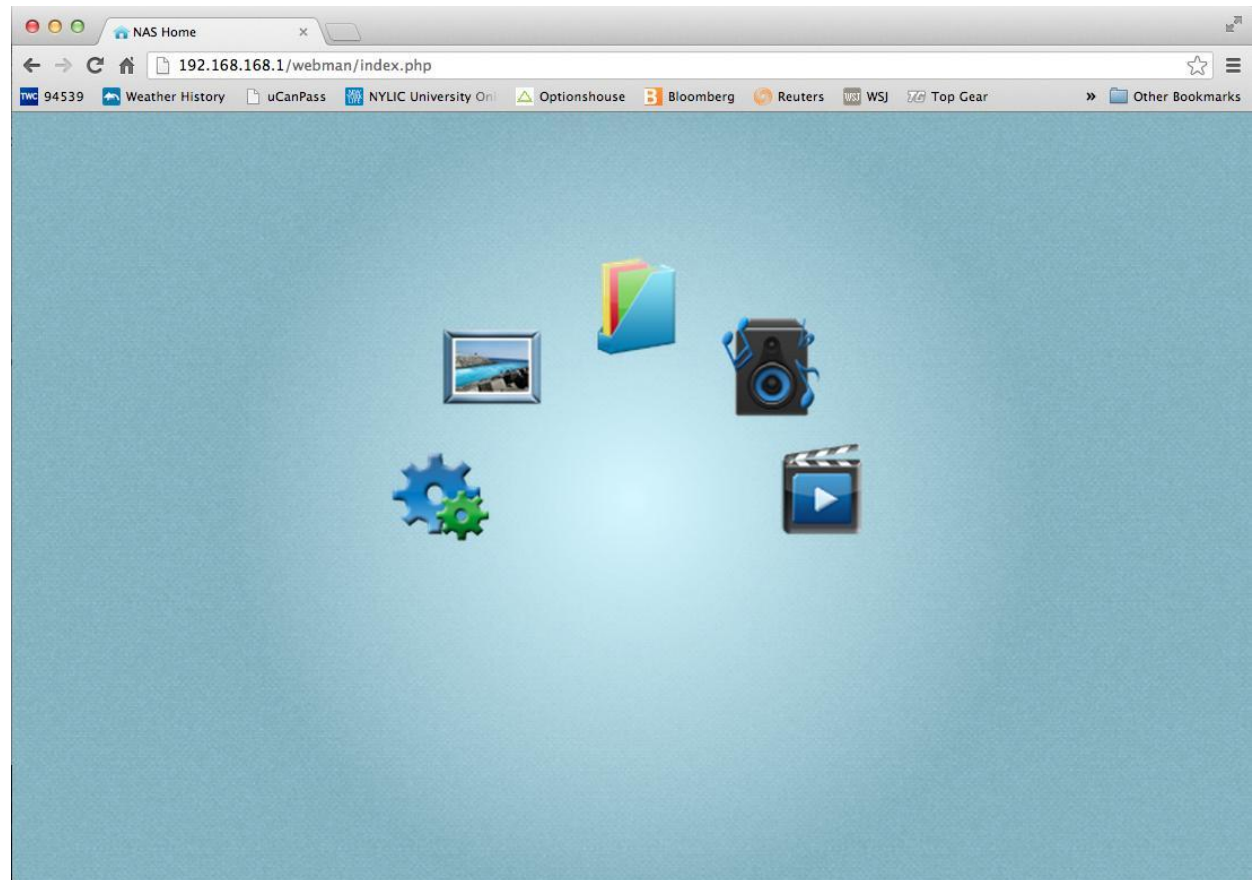
Settings

Photos

Files

Music

Video



Click an icon to view the data in that list.

This is the file list.

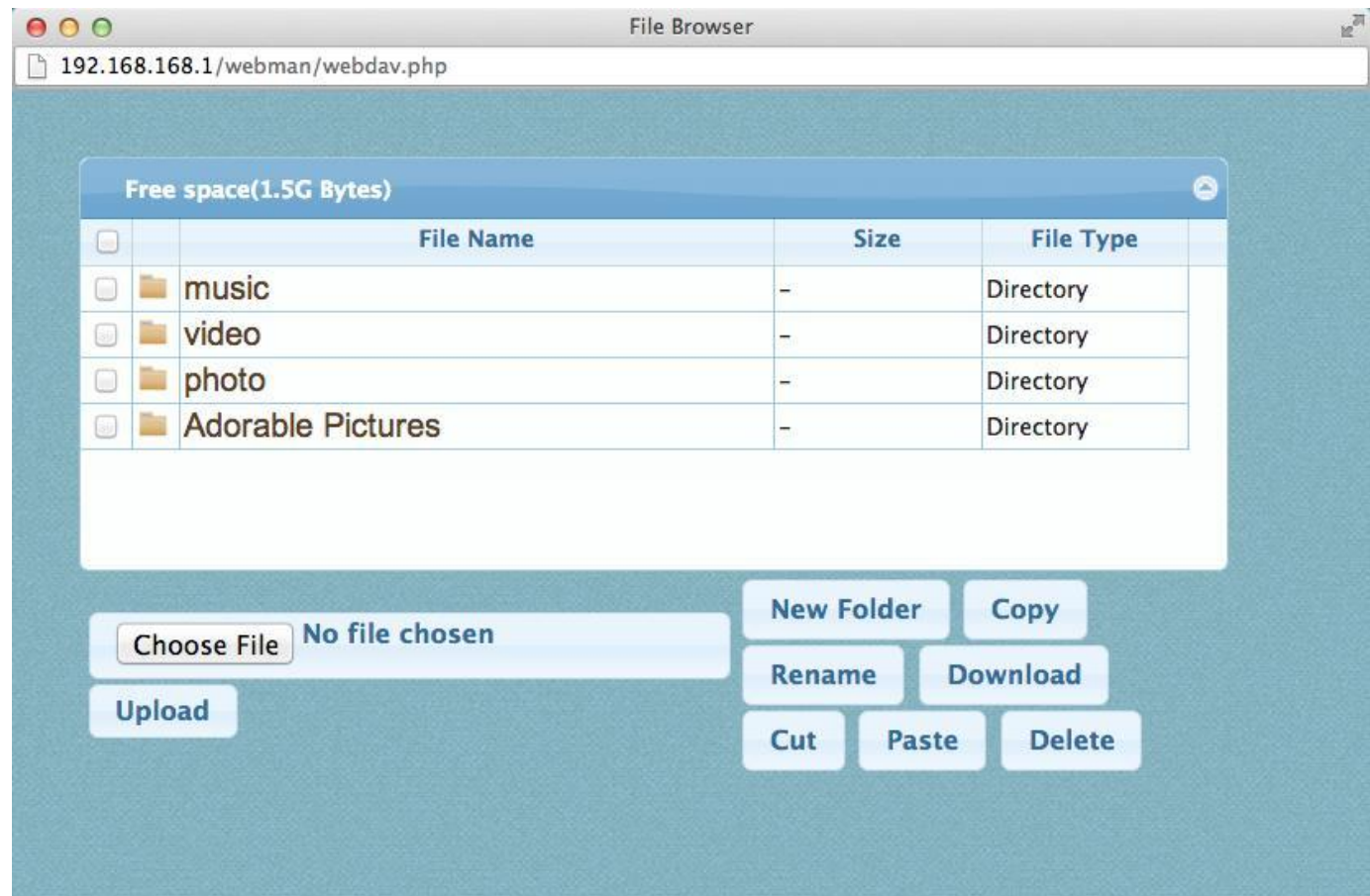
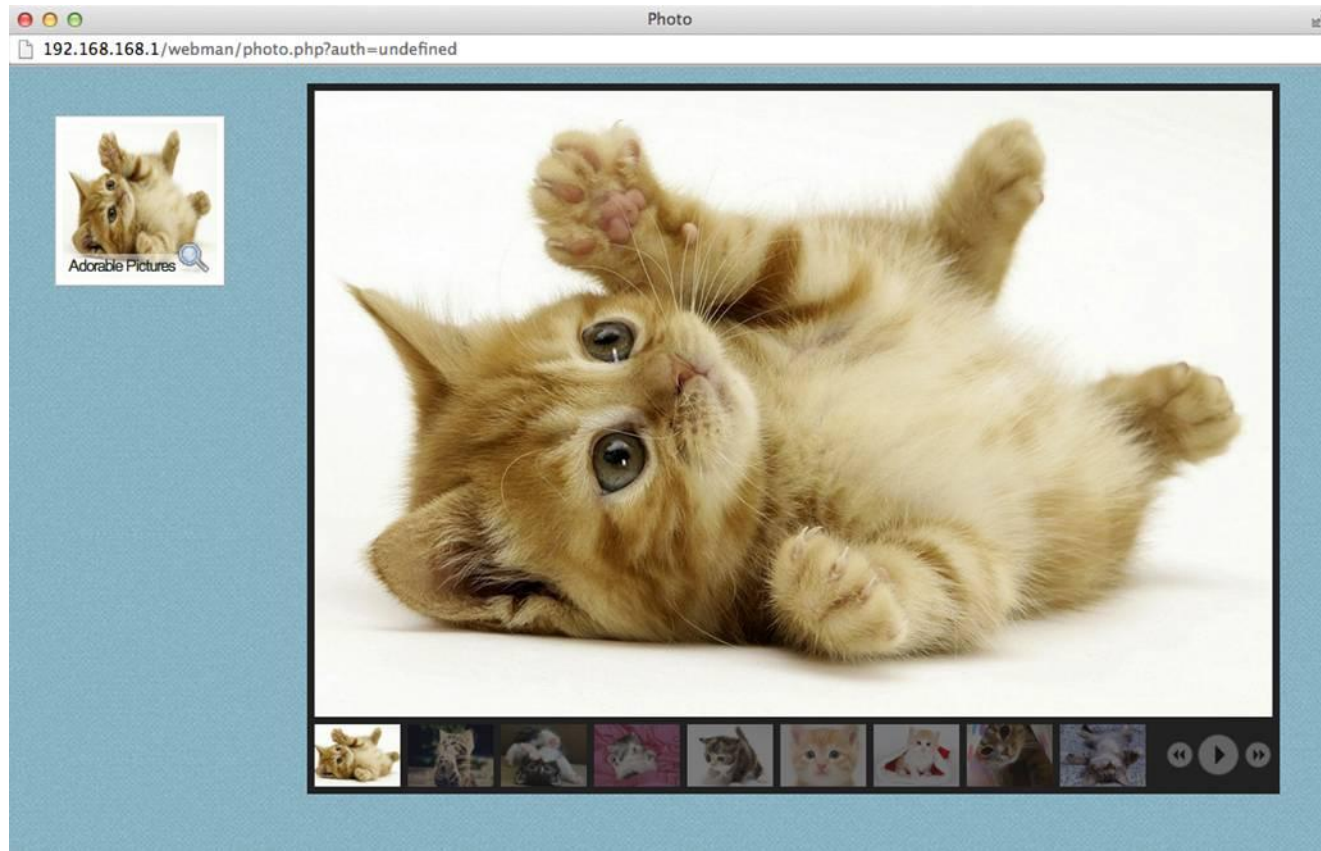
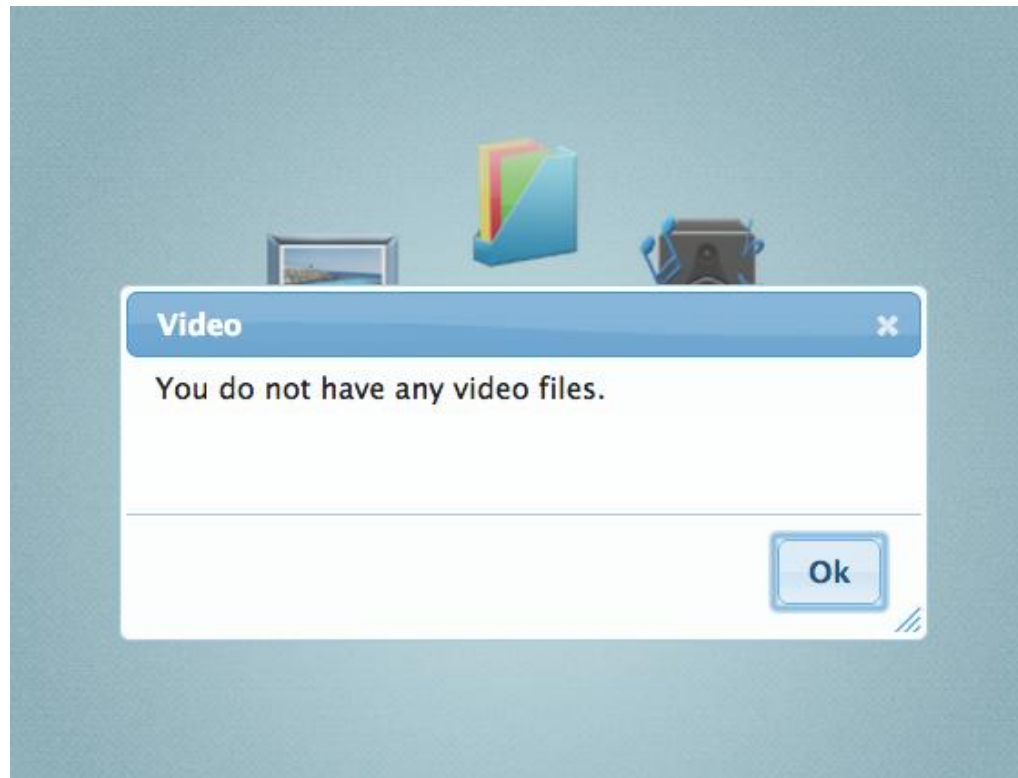


Photo list displays as a gallery.



If you click an empty list it will show this:



Settings List

Here you can access to change the SSID or password.
Also, you can update the firmware.

192.168.168.1/webman/setting.php

NAS - Wifi Setting

System Information Firmware Update

WiFi Setting [* Configure](#)

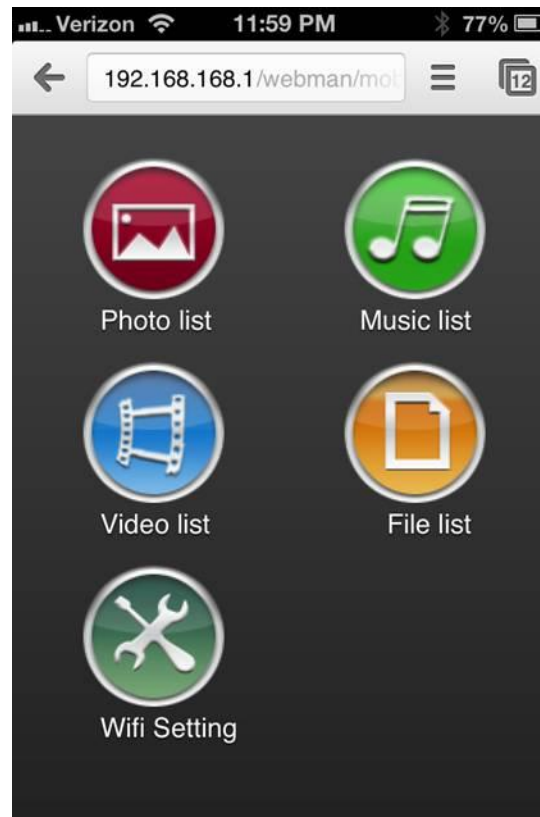
AP	
Item	Value
SSID	WifiUSB
WiFi Password	12345678

Navigating with a Mobile Interface

Open a browser.

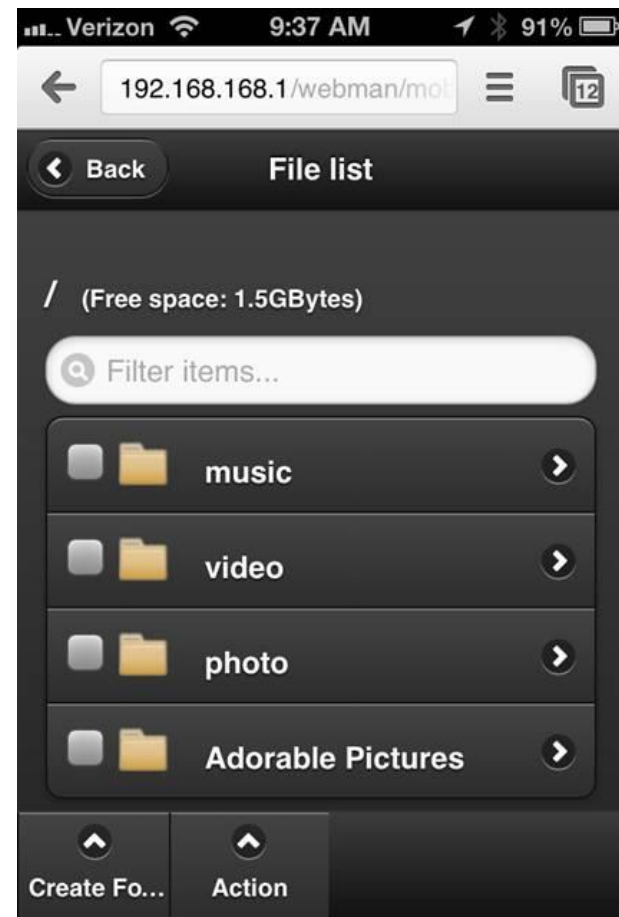


Navigation menu on a mobile interface.

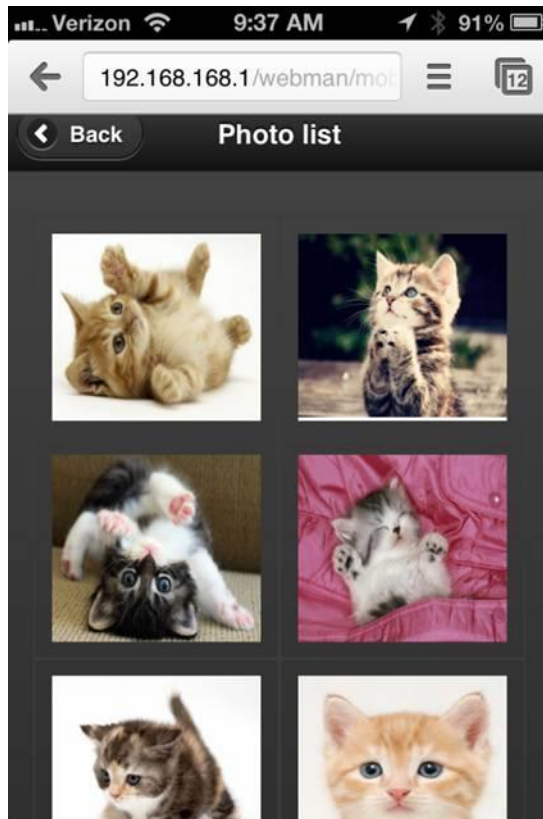


Click an icon to view the data in that list.

This is the file list.



Data can be easily previewed and downloaded.



The Super Talent Wi-Cap can be used for:

- Projects
- Sharing data during meetings
- Broadcasting information at exhibits or displays
- And more!

For Technical Support:

If additional support is needed, please visit
www.supertalent.com/support/support.php or email
support@supertalent.com.

Contact Information:

Super Talent Technology
2077 North Capitol Avenue
San Jose, CA
Tel: +1 (408) 934-2560

